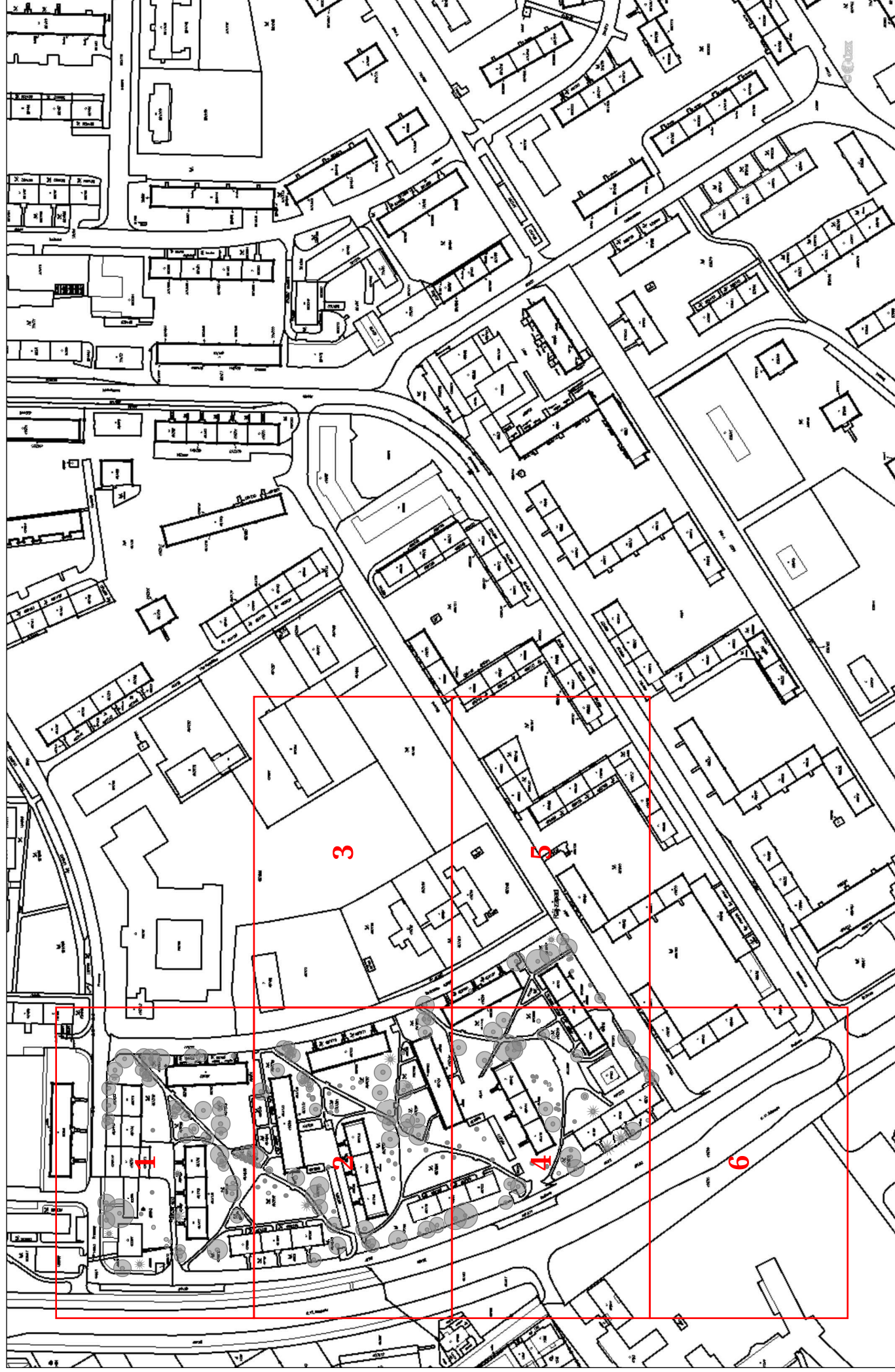
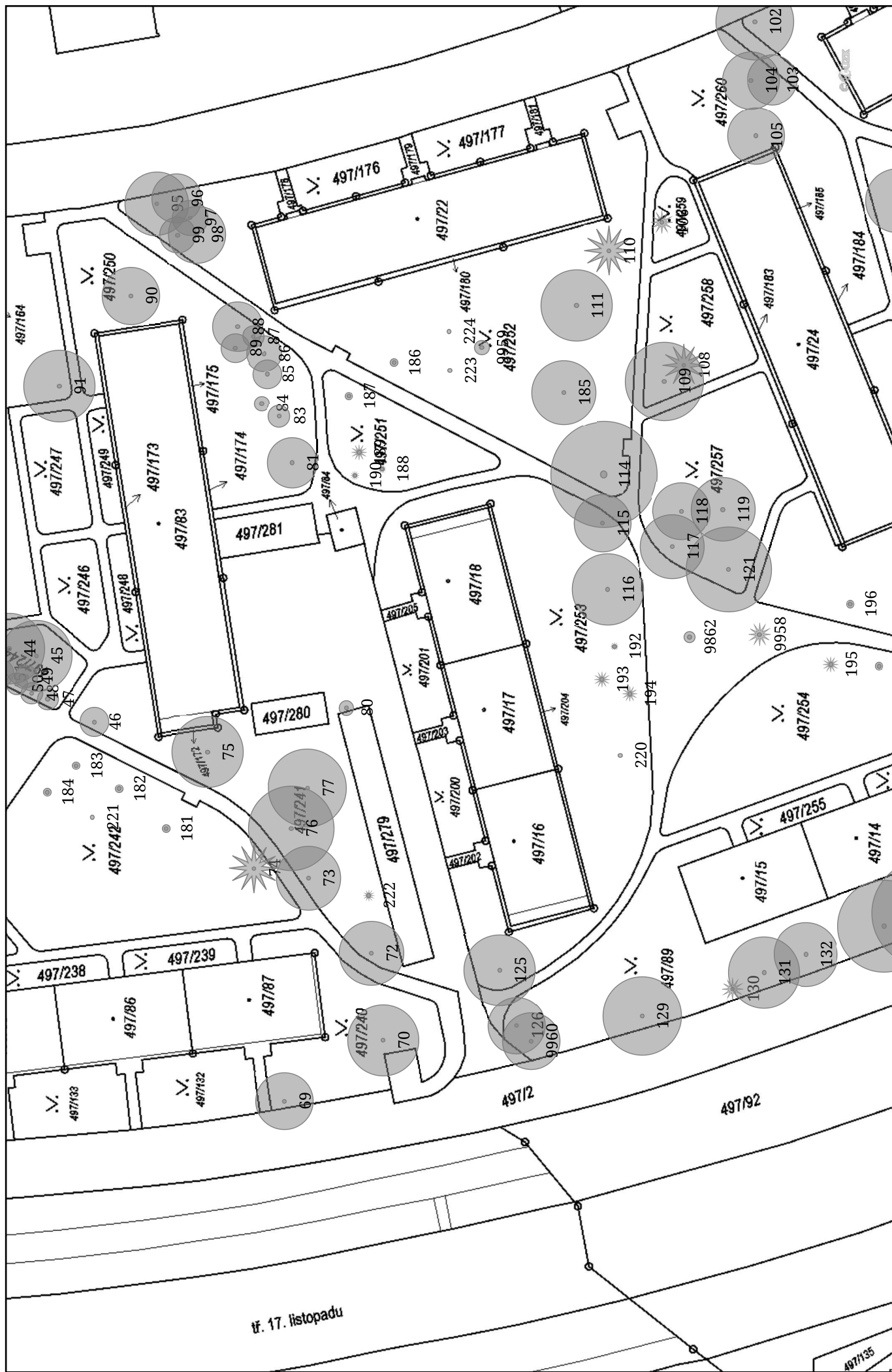


Prameny x Božkova x Březová(1:700) - Klad listů (1:2975)



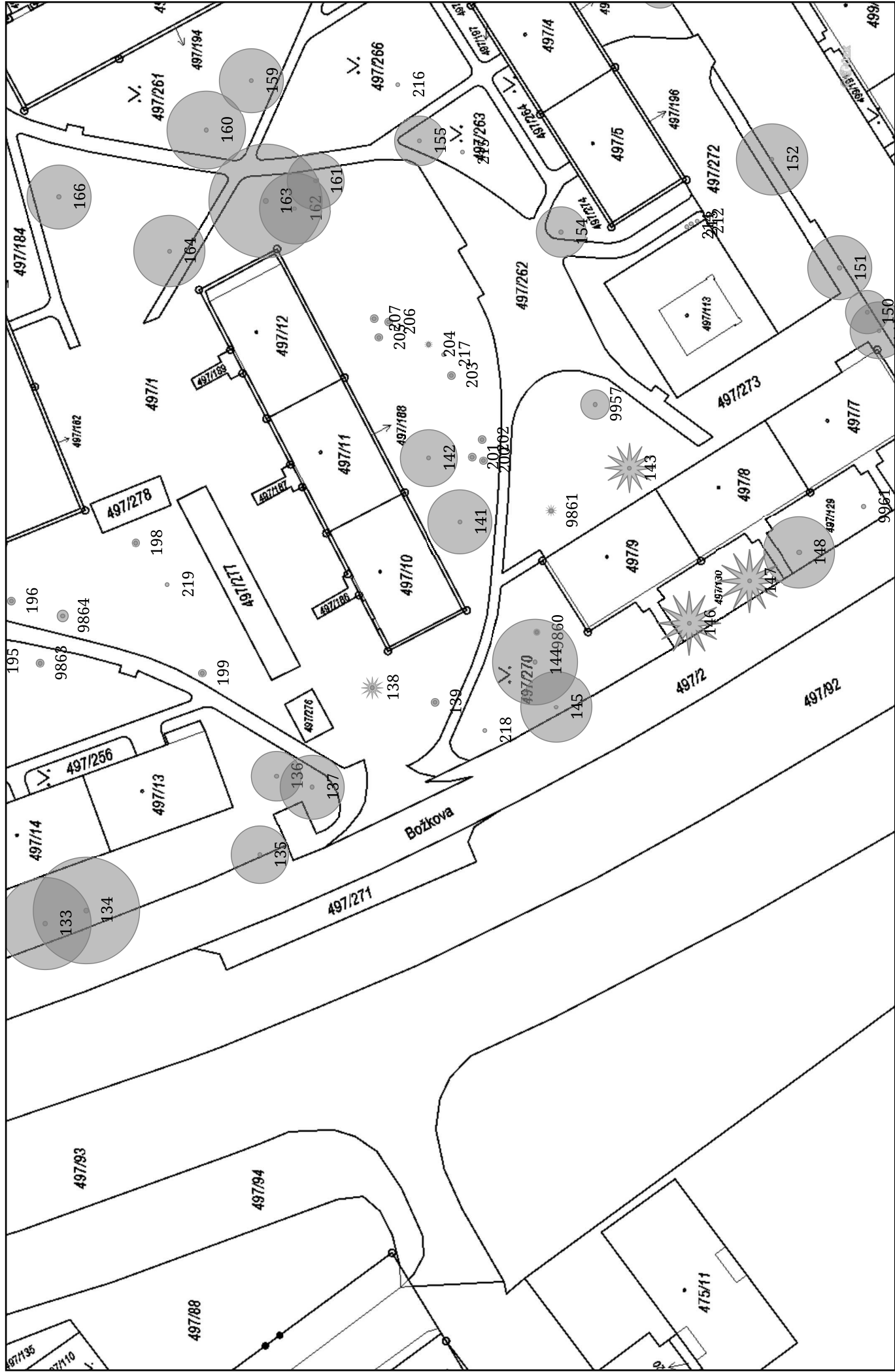
Prameny x Božkova x Březová(1:700), 2/6



Prameny x Božkova x Březová(1:700), 3/6



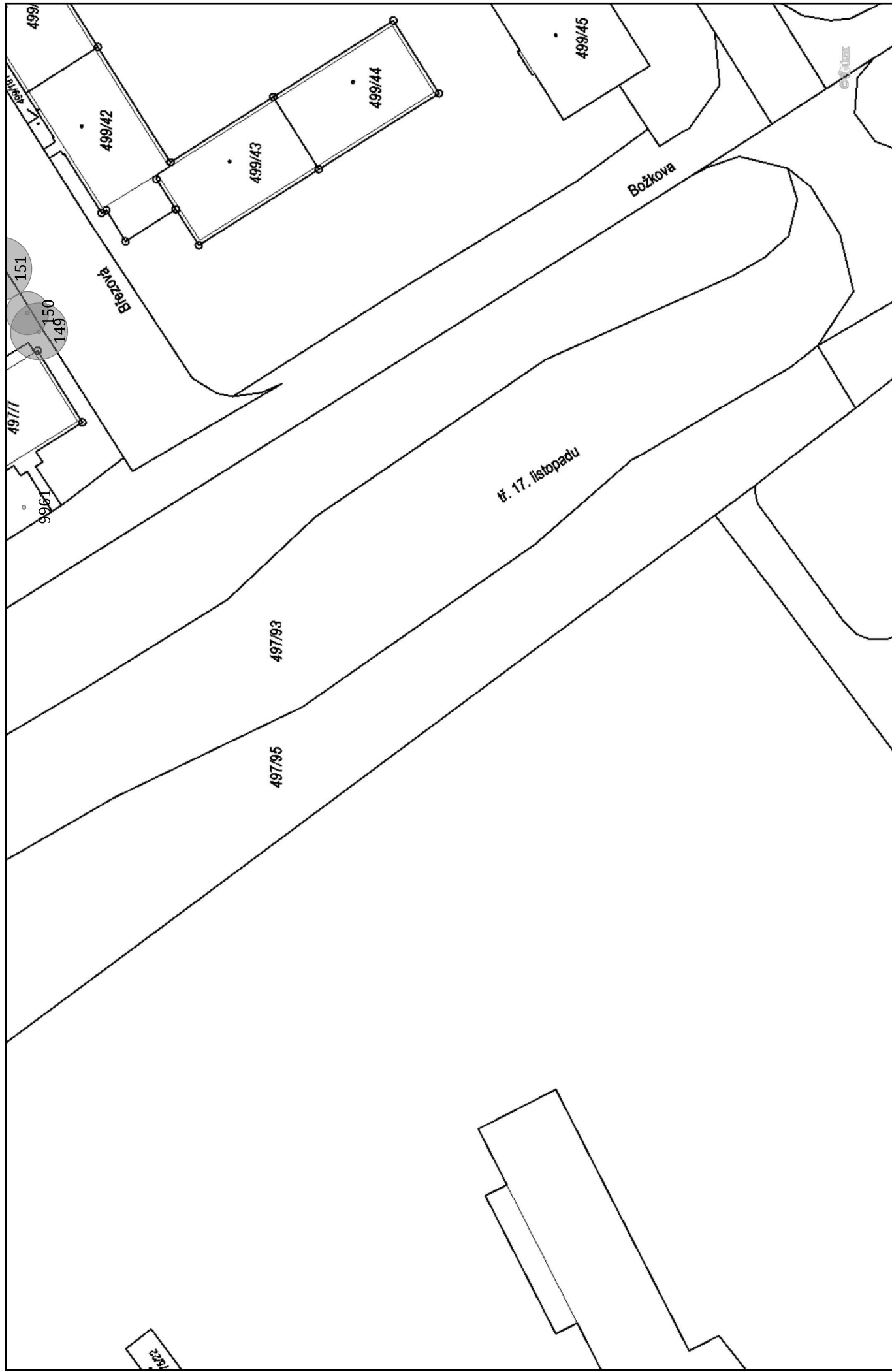
Prameny x Božkova x Březová(1:700), 4/6



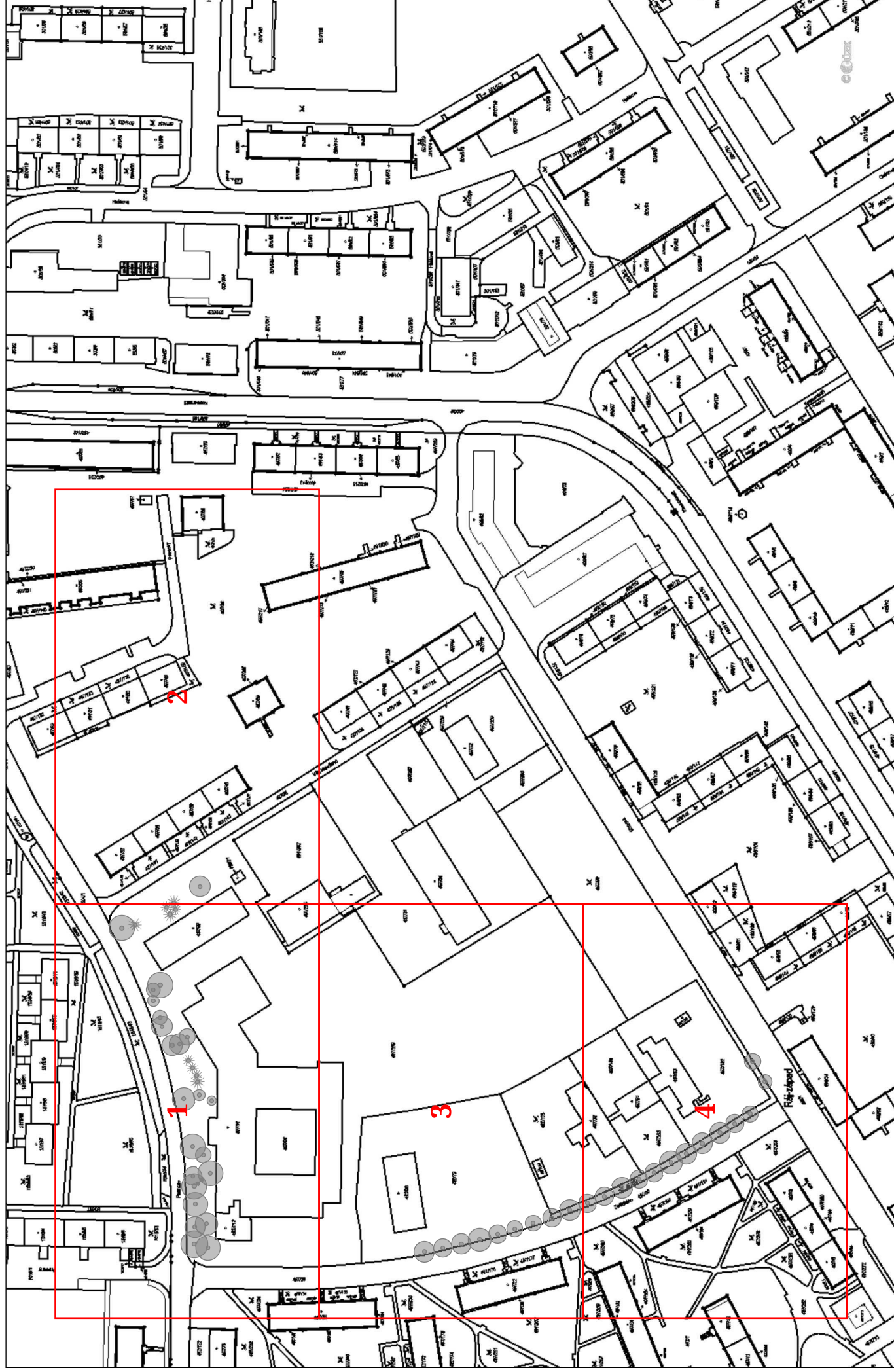
Prameny x Božkova x Březová(1:700), 5/6



Prameny x Božkova x Březová(1:700), 6/6



Prameny x Dačického x Březová x Víta Nejedlého(1:700) - Klad listů (1:2231)

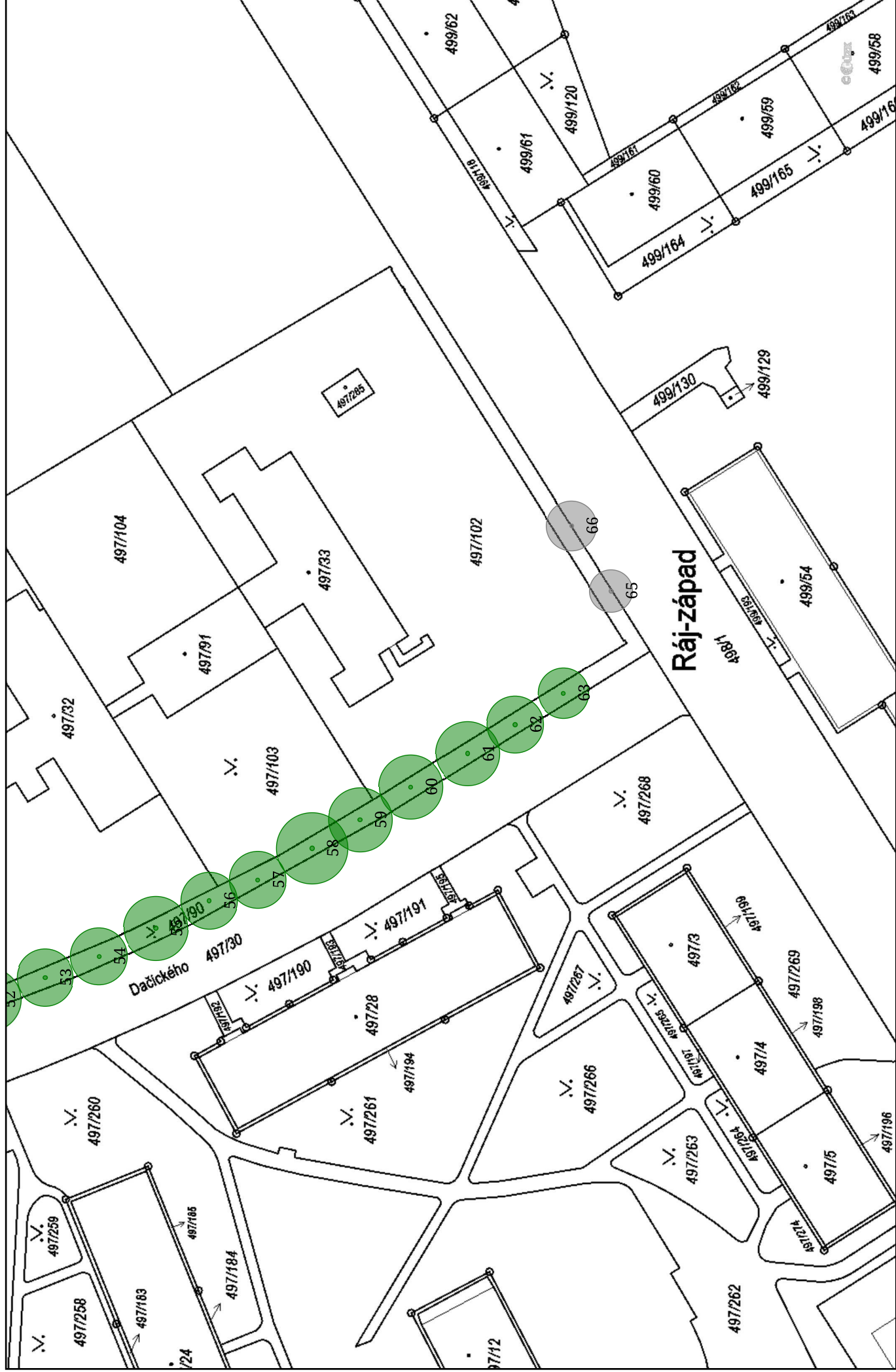


[illegible]

Prameny x Dačického x Březová x Víta Nejedlého(1:700), 3/4



Prameny x Dačického x Březová x Víta Nejedlého(1:700), 4/4



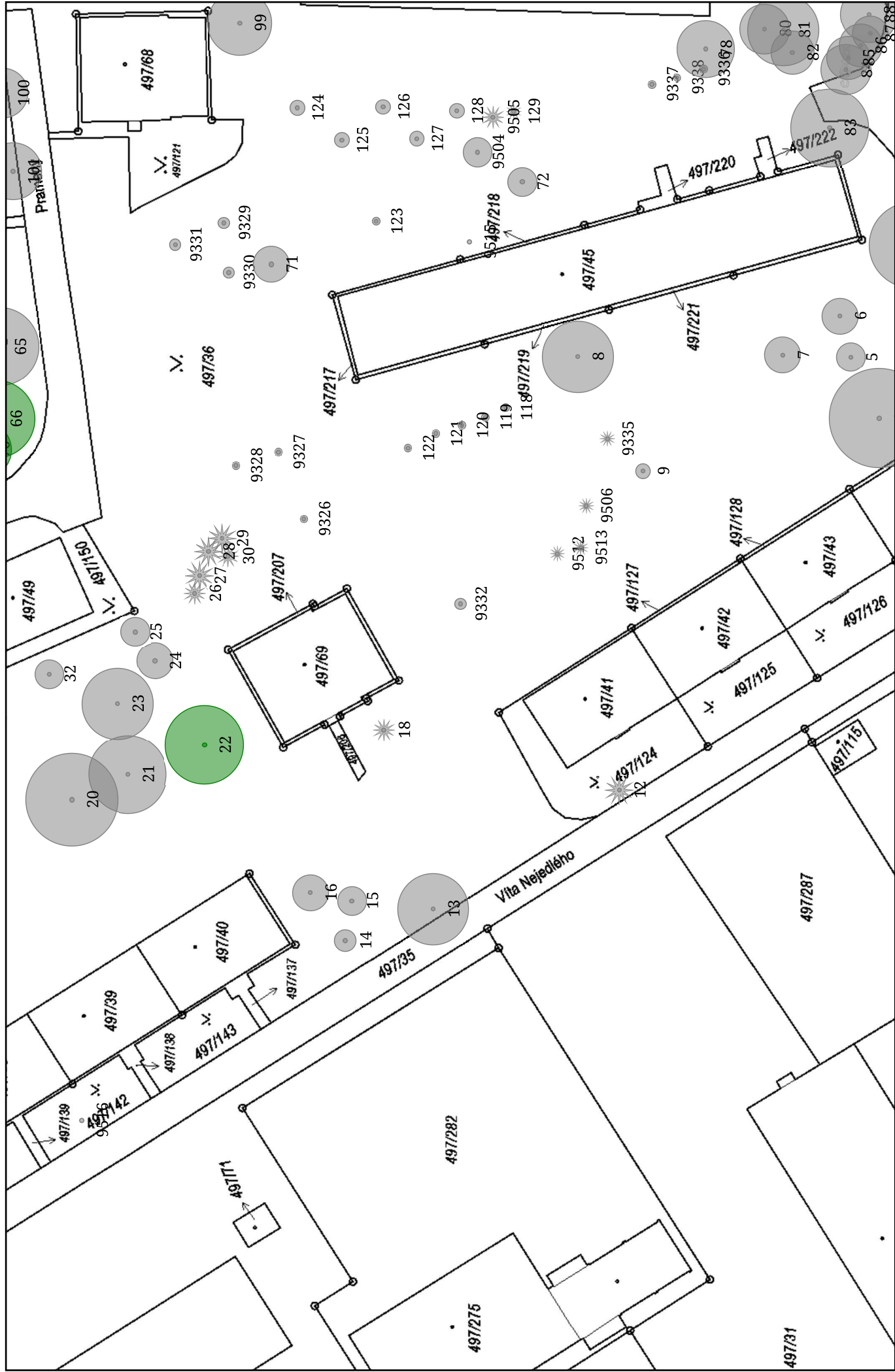
Prameny x Víta Nejedlého x Březová x Kosmonautů(1:700) - Klad listů (1:2231)



Prameny x Víta Nejedlého x Březová x Kosmonautů(1:700), 1/5



Prameny x Víta Nejedlého x Březová x Kosmonautů(1:700), 3/5



Rudé armády x Slovenská(1:700) - Klad listů (1:8181)

1	2
3	4
5	6
7	8
9	10

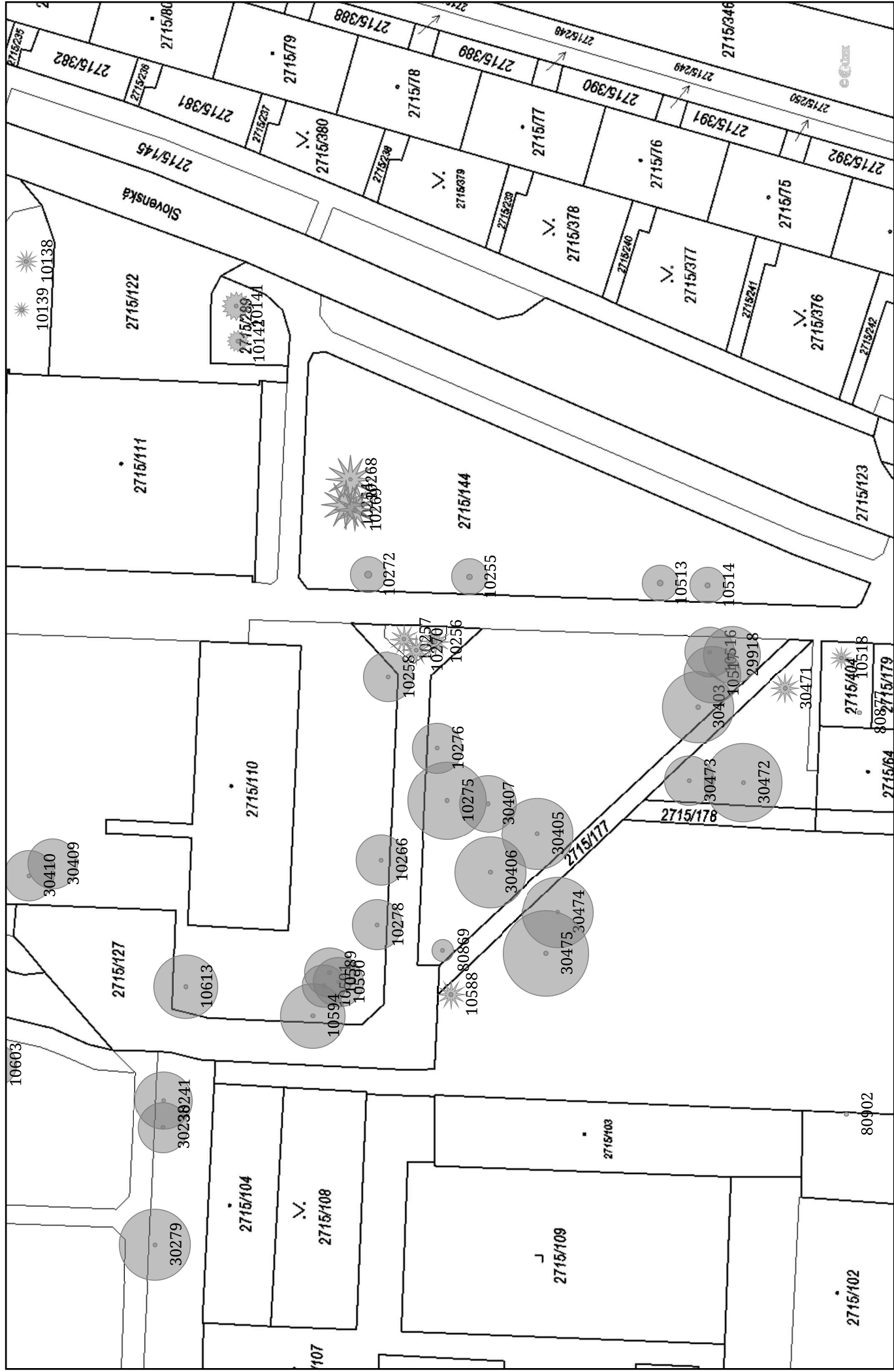
11

12	13
----	----

Rudé armády x Slovenská(1:700), 1/13



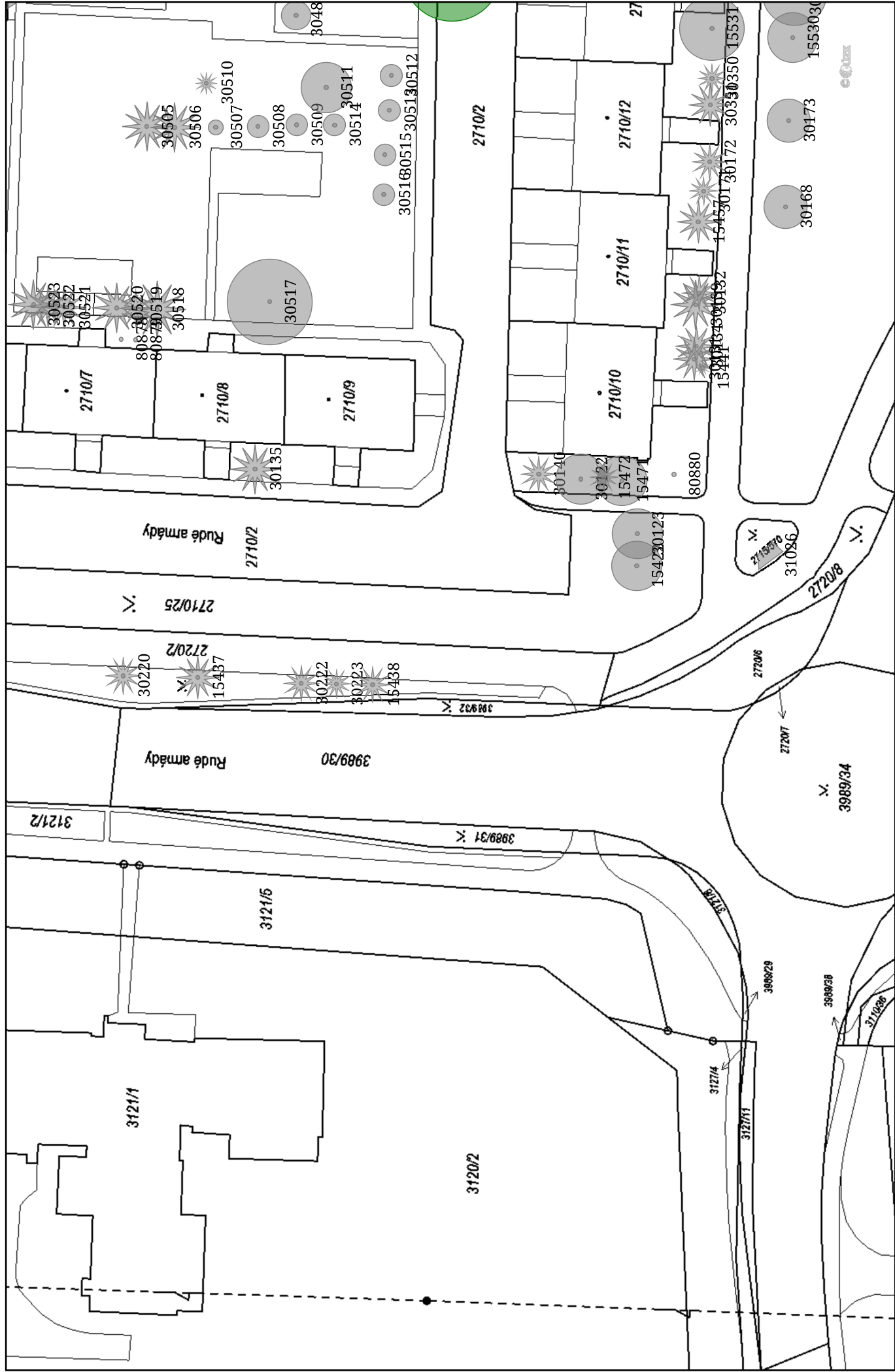
Rudé armády x Slovenská(1:700), 4/13



Rudé armády x Slovenská(1:700), 6/13



Rudé armády x Slovenská(1:700), 7/13

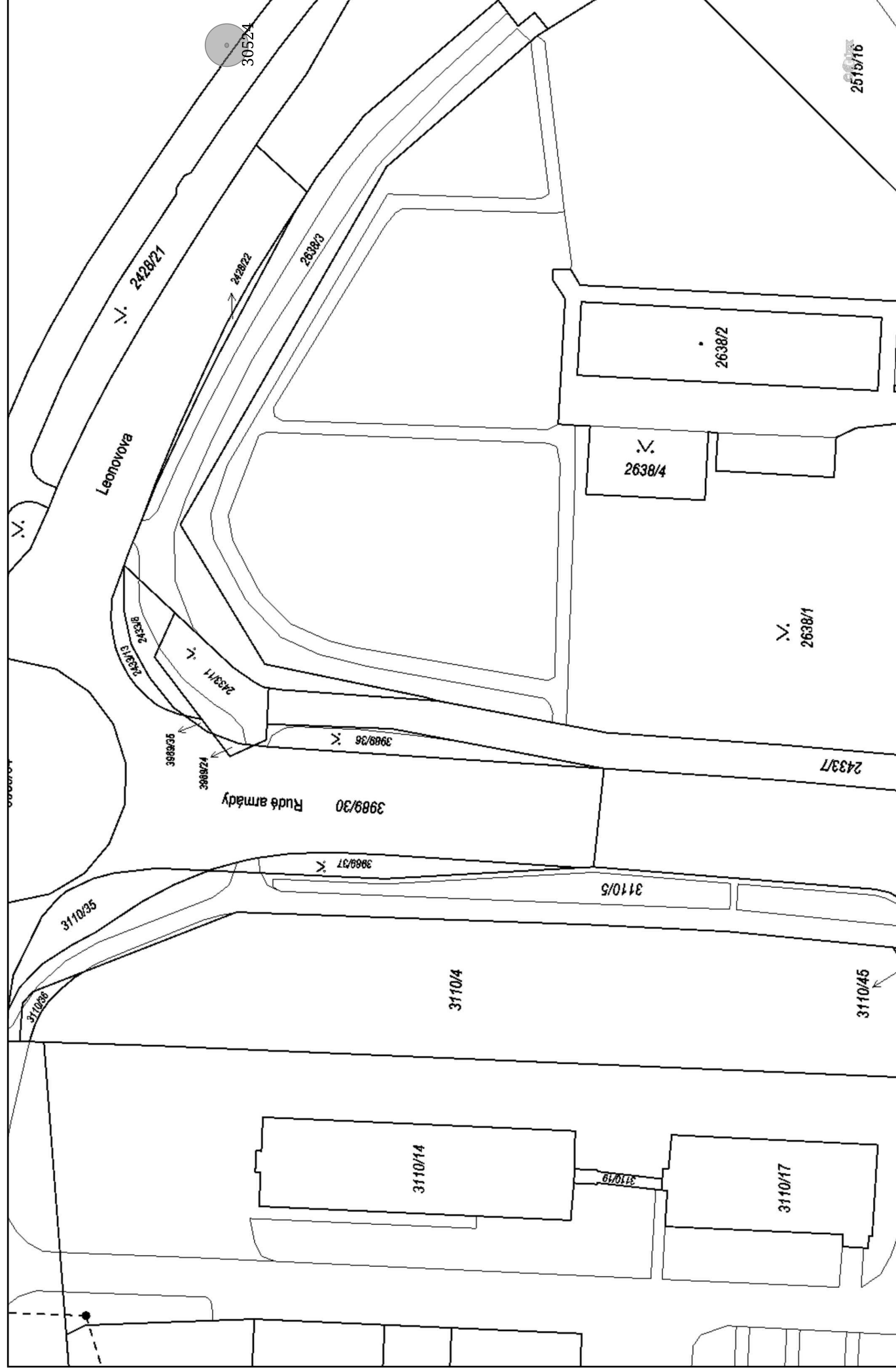


This is a detailed parcel map of a residential area. The map shows a grid of streets with lots numbered in the 2715, 2710, 3048, and 3050 series. A green circle highlights lot 10624. Various symbols like stars and circles are scattered throughout the map.

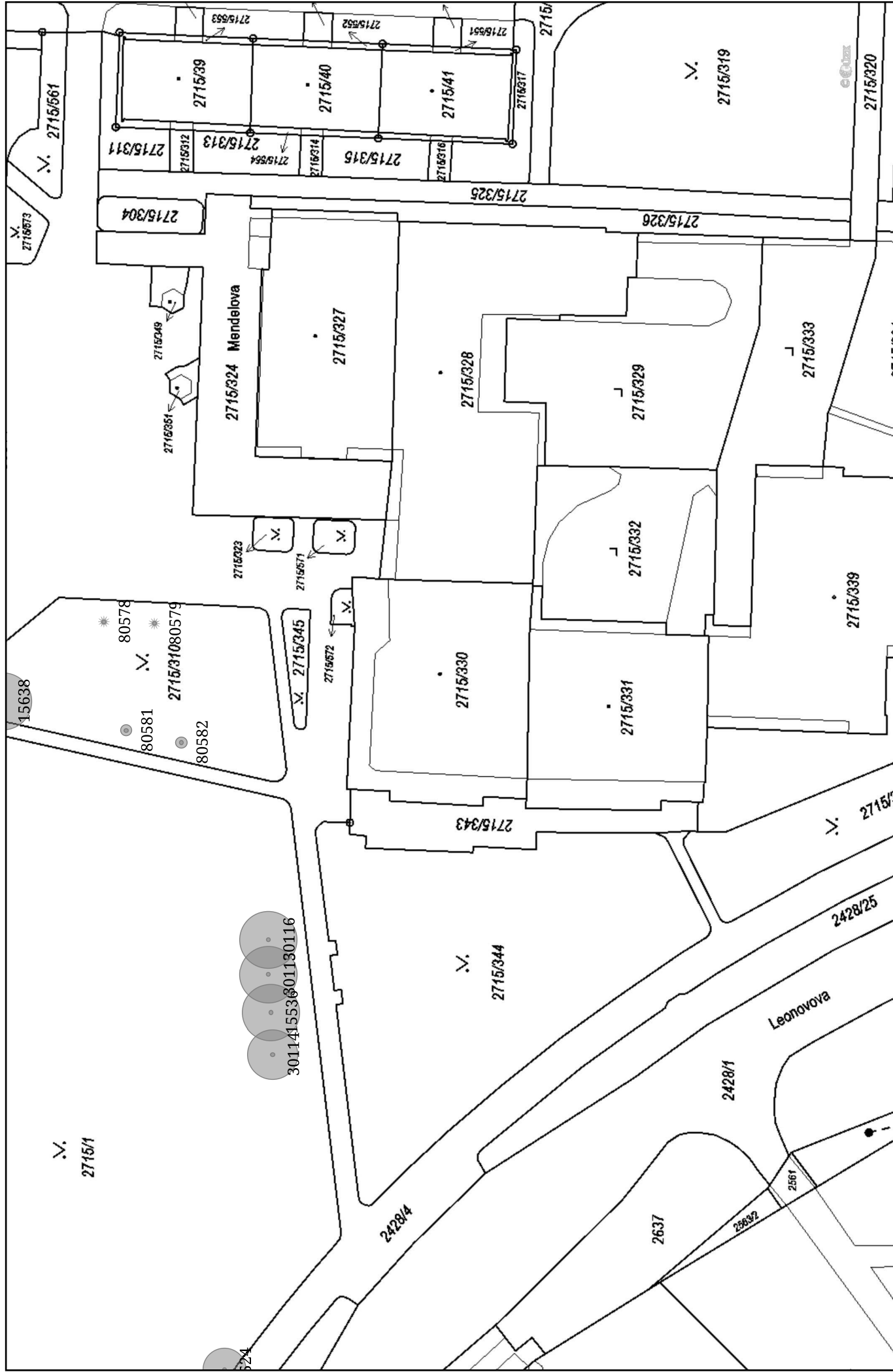
Key features include:

- Streets:** A network of streets forming a grid, with some streets having names like "2715/157", "2715/123", "2715/291", "2715/292", "2715/293", "2715/294", "2715/295", "2715/296", "2715/297", "2715/298", "2715/299", "2715/300", "2715/301", "2715/302", "2715/303", "2715/304", "2715/305", "2715/306", "2715/307", "2715/308", "2715/309", "2715/310", "2715/311", "2715/312", "2715/313", "2715/314", "2715/315", "2715/316", "2715/317", "2715/318", "2715/319", "2715/320", "2715/321", "2715/322", "2715/323", "2715/324", "2715/325", "2715/326", "2715/327", "2715/328", "2715/329", "2715/330", "2715/331", "2715/332", "2715/333", "2715/334", "2715/335", "2715/336", "2715/337", "2715/338", "2715/339", "2715/340", "2715/341", "2715/342", "2715/343", "2715/344", "2715/345", "2715/346", "2715/347", "2715/348", "2715/349", "2715/350", "2715/351", "2715/352", "2715/353", "2715/354", "2715/355", "2715/356", "2715/357", "2715/358", "2715/359", "2715/360", "2715/361", "2715/362", "2715/363", "2715/364", "2715/365", "2715/366", "2715/367", "2715/368", "2715/369", "2715/370", "2715/371", "2715/372", "2715/373", "2715/374", "2715/375", "2715/376", "2715/377", "2715/378", "2715/379", "2715/380", "2715/381", "2715/382", "2715/383", "2715/384", "2715/385", "2715/386", "2715/387", "2715/388", "2715/389", "2715/390", "2715/391", "2715/392", "2715/393", "2715/394", "2715/395", "2715/396", "2715/397", "2715/398", "2715/399", "2715/400", "2715/401", "2715/402", "2715/403", "2715/404", "2715/405", "2715/406", "2715/407", "2715/408", "2715/409", "2715/410", "2715/411", "2715/412", "2715/413", "2715/414", "2715/415", "2715/416", "2715/417", "2715/418", "2715/419", "2715/420", "2715/421", "2715/422", "2715/423", "2715/424", "2715/425", "2715/426", "2715/427", "2715/428", "2715/429", "2715/430", "2715/431", "2715/432", "2715/433", "2715/434", "2715/435", "2715/436", "2715/437", "2715/438", "2715/439", "2715/440", "2715/441", "2715/442", "2715/443", "2715/444", "2715/445", "2715/446", "2715/447", "2715/448", "2715/449", "2715/450", "2715/451", "2715/452", "2715/453", "2715/454", "2715/455", "2715/456", "2715/457", "2715/458", "2715/459", "2715/460", "2715/461", "2715/462", "2715/463", "2715/464", "2715/465", "2715/466", "2715/467", "2715/468", "2715/469", "2715/470", "2715/471", "2715/472", "2715/473", "2715/474", "2715/475", "2715/476", "2715/477", "2715/478", "2715/479", "2715/480", "2715/481", "2715/482", "2715/483", "2715/484", "2715/485", "2715/486", "2715/487", "2715/488", "2715/489", "2715/490", "2715/491", "2715/492", "2715/493", "2715/494", "2715/495", "2715/496", "2715/497", "2715/498", "2715/499", "2715/500", "2715/501", "2715/502", "2715/503", "2715/504", "2715/505", "2715/506", "2715/507", "2715/508", "2715/509", "2715/510", "2715/511", "2715/512", "2715/513", "2715/514", "2715/515", "2715/516", "2715/517", "2715/518", "2715/519", "2715/520", "2715/521", "2715/522", "2715/523", "2715/524", "2715/525", "2715/526", "2715/527", "2715/528", "2715/529", "2715/530", "2715/531", "2715/532", "2715/533", "2715/534", "2715/535", "2715/536", "2715/537", "2715/538", "2715/539", "2715/540", "2715/541", "2715/542", "2715/543", "2715/544", "2715/545", "2715/546", "2715/547", "2715/548", "2715/549", "2715/550", "2715/551", "2715/552", "2715/553", "2715/554", "2715/555", "2715/556", "2715/557", "2715/558", "2715/559", "2715/560", "2715/561", "2715/562", "2715/563", "2715/564", "2715/565", "2715/566", "2715/567", "2715/568", "2715/569", "2715/570", "2715/571", "2715/572", "2715/573", "2715/574", "2715/575", "2715/576", "2715/577", "2715/578", "2715/579", "2715/580", "2715/581", "2715/582", "2715/583", "2715/584", "2715/585", "2715/586", "2715/587", "2715/588", "2715/589", "2715/590", "2715/591", "2715/592", "2715/593", "2715/594", "2715/595", "2715/596", "2715/597", "2715/598", "2715/599", "2715/600", "2715/601", "2715/602", "2715/603", "2715/604", "2715/605", "2715/606", "2715/607", "2715/608", "2715/609", "2715/610", "2715/611", "2715/612", "2715/613", "2715/614", "2715/615", "2715/616", "2715/617", "2715/618", "2715/619", "2715/620", "2715/621", "2715/622", "2715/623", "2715/624", "2715/625", "2715/626", "2715/627", "2715/628", "2715/629", "2715/630", "2715/631", "2715/632", "2715/633", "2715/634", "2715/635", "2715/636", "2715/637", "2715/638", "2715/639", "2715/640", "2715/641", "2715/642", "2715/643", "2715/644", "2715/645", "2715/646", "2715/647", "2715/648", "2715/649", "2715/650", "2715/651", "2715/652", "2715/653", "2715/654", "2715/655", "2715/656", "2715/657", "2715/658", "2715/659", "2715/660", "2715/661", "2715/662", "2715/663", "2715/664", "2715/665", "2715/666", "2715/667", "2715/668", "2715/669", "2715/670", "2715/671", "2715/672", "2715/673", "2715/674", "2715/675", "2715/676", "2715/677", "2715/678", "27

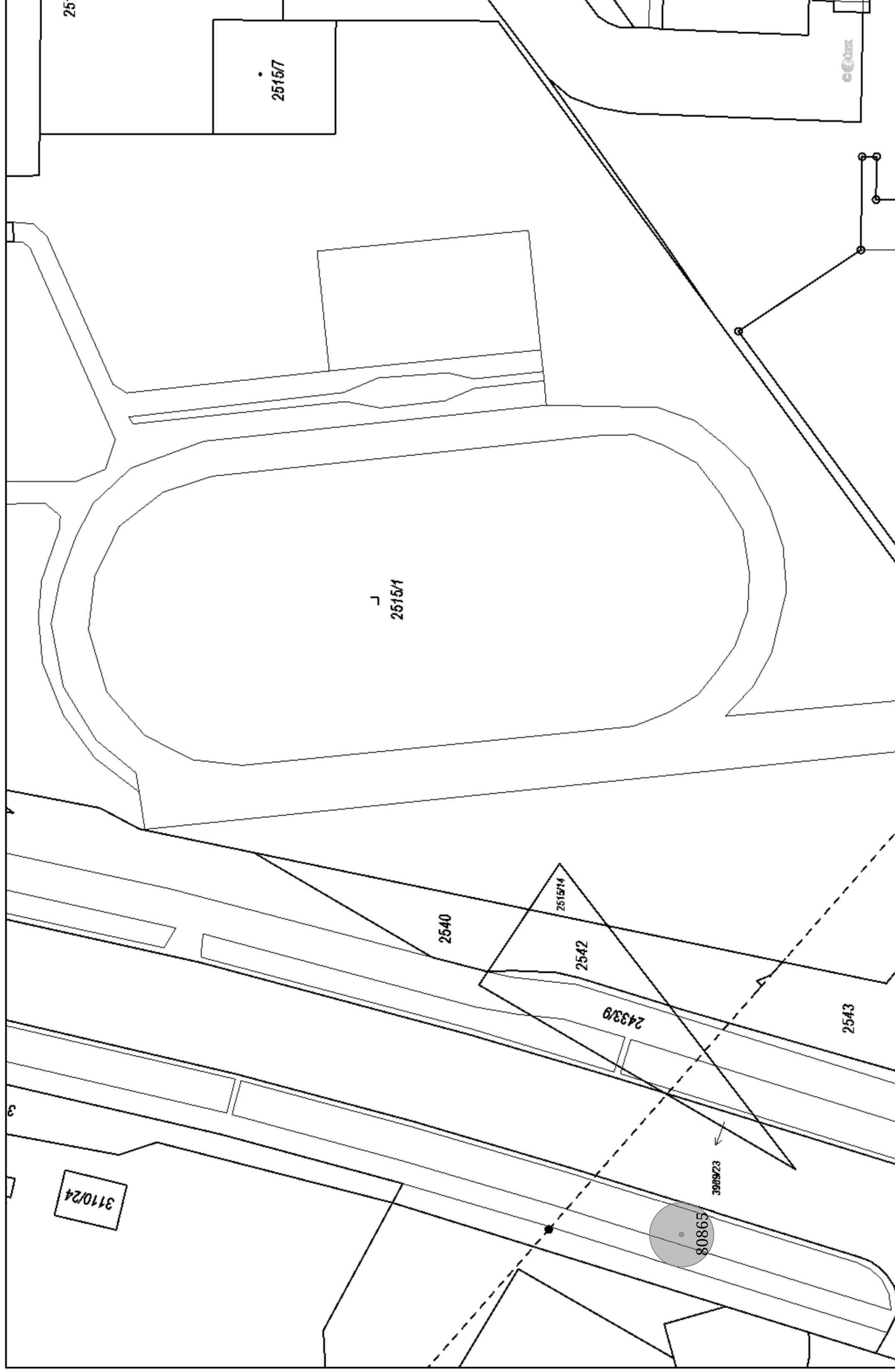
Rudé armády x Slovenská(1:700), 9/13



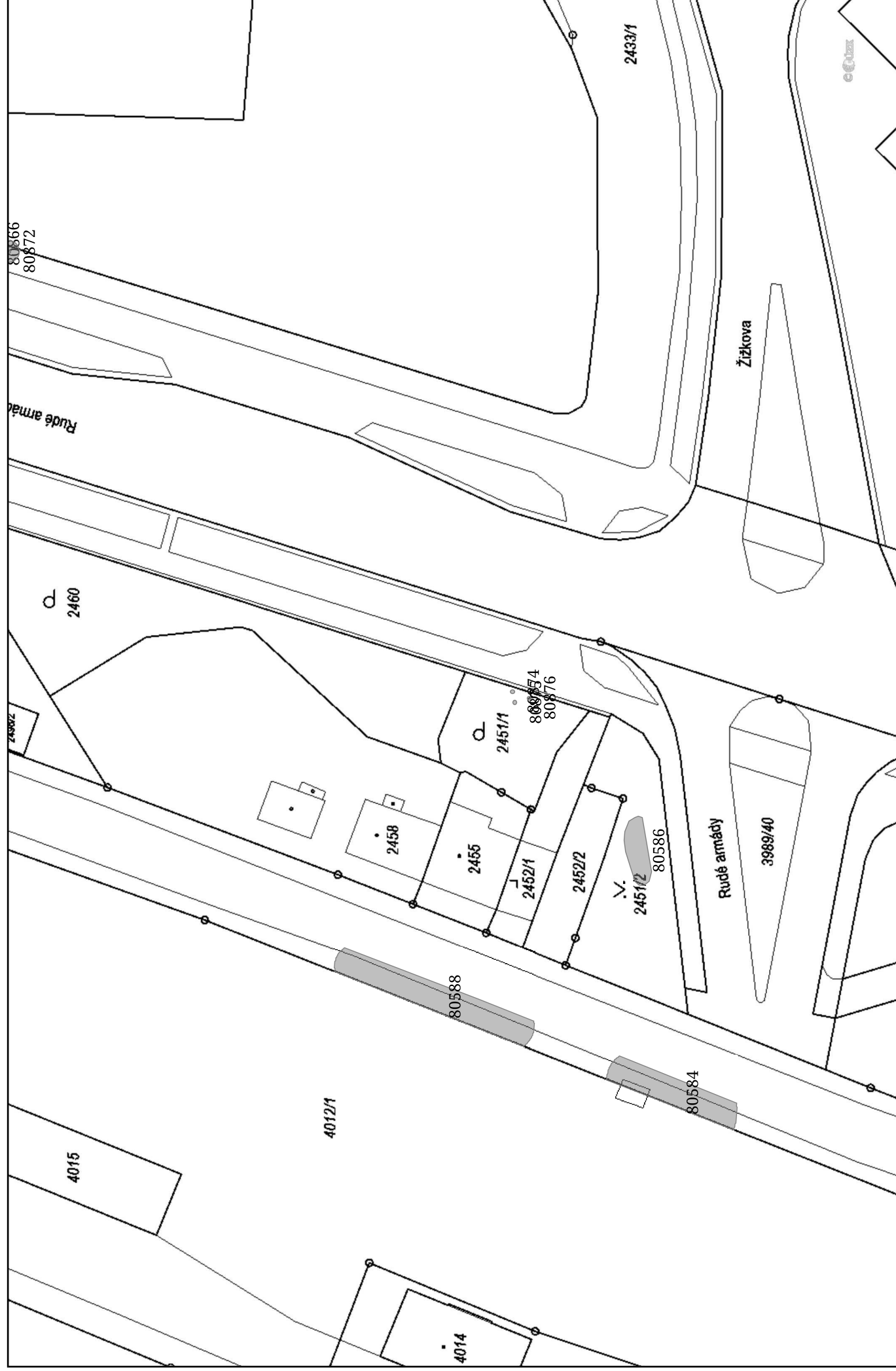
Rudé armády x Slovenská(1:700), 10/13



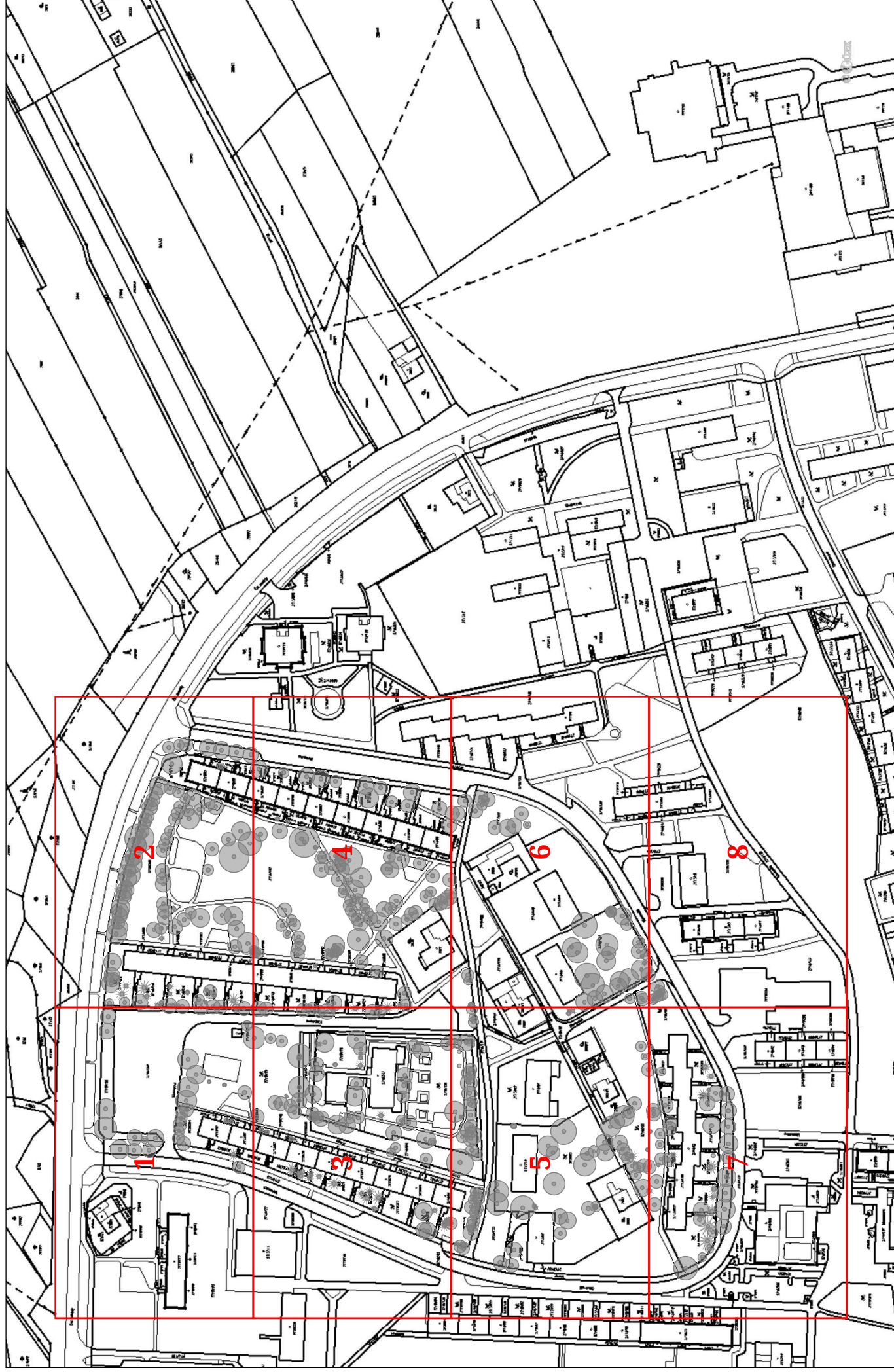
Rudé armády x Slovenská(1:700), 11/13



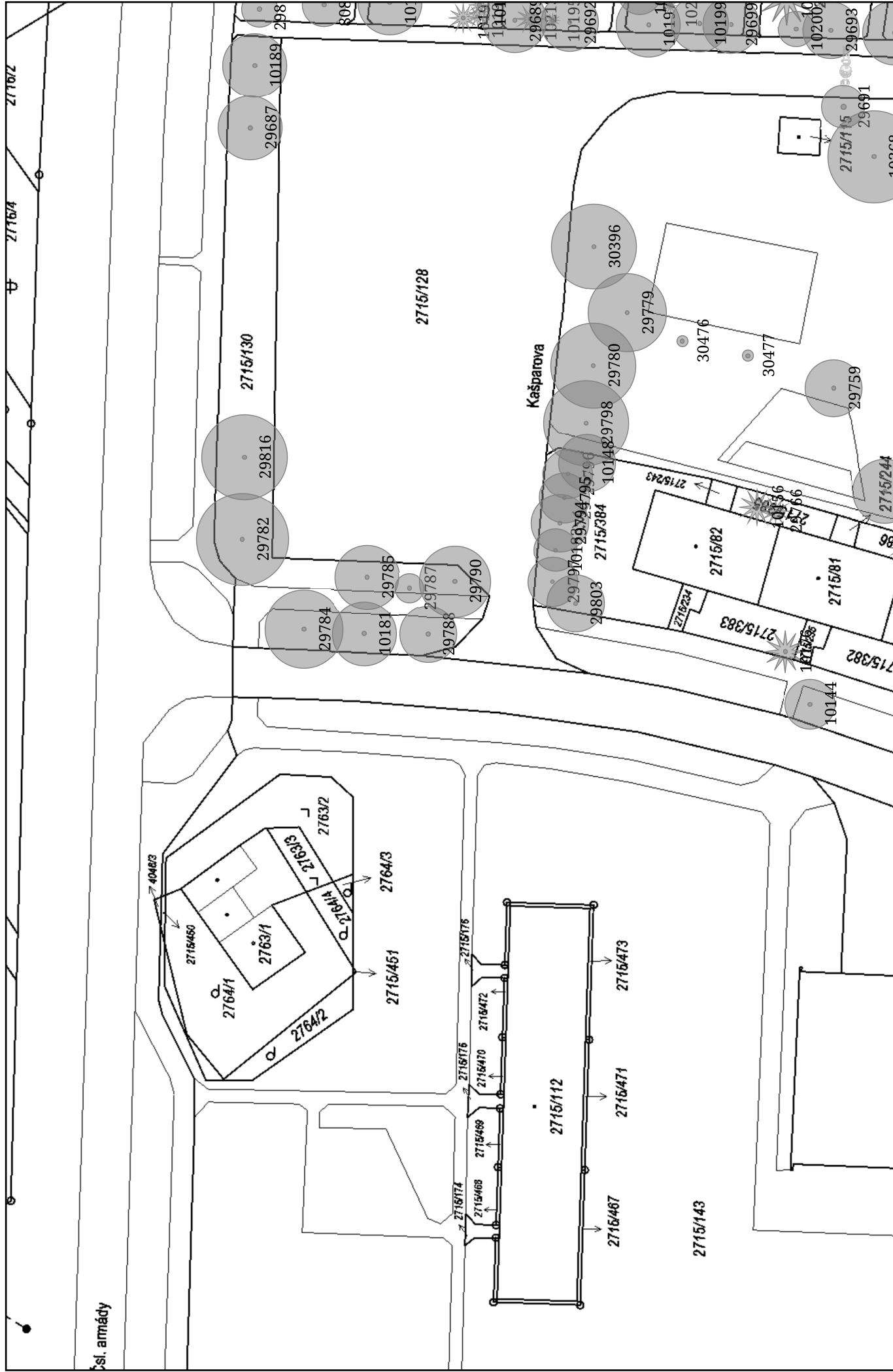
Rudé armády x Slovenská(1:700), 13/13



Slovenská - sídliště(1:700) - Klad listů (1:2975)

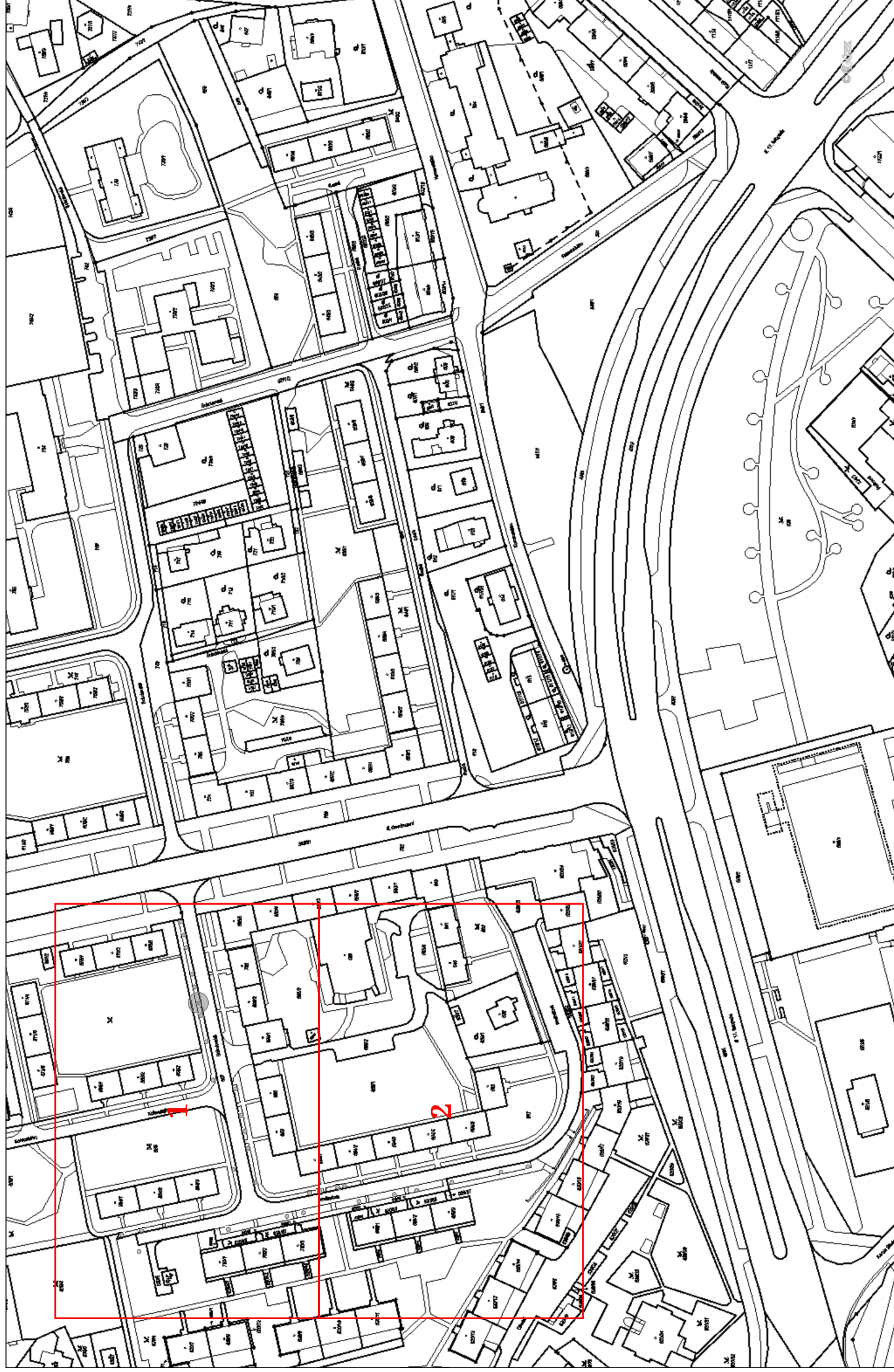


Slovenská - sídliště(1:700), 1/8



[illegible]

Sokolovská(1:700) - Klad listů (1:2231)



Sokolovská(1:700), 1/2



Studentská x Rudé armády x Tř. 17. listopadu(1:700) - Klad listů (1:3718)

